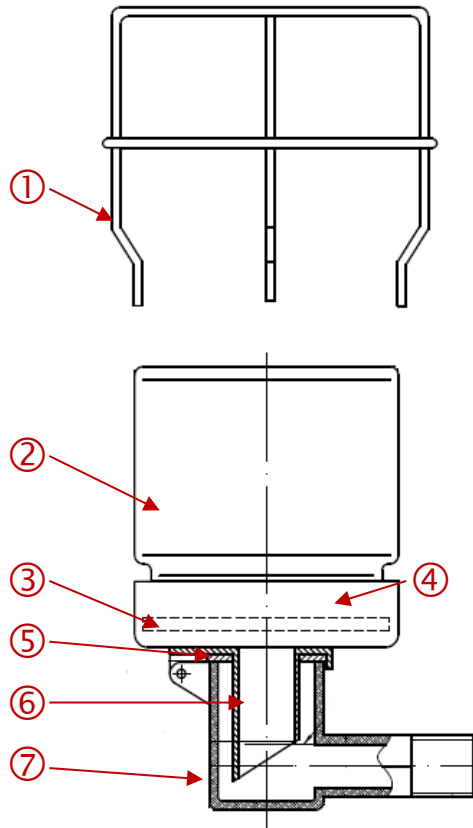


Ölstandregler – klappbar

Constant Level Oiler - hinged



Nr.	Bezeichnung	Material	Beschreibung
①	Schutzkorb <i>Protection basket</i>	Edelstahl V2A 1.4301 <i>Stainless Steel V2A</i>	Separat bestellbar <i>Separately available</i>
②	Vorratsglas <i>Reservoir</i>	Naturglas <i>Natural glass</i>	Inhalt 120 ccm <i>Content 120 ccm</i>
③	Dichtungsring Vorratsglas <i>Sealing ring Reservoir</i>	NBR (Acrylnitril- Butadien-Kautschuk)	-30° ... +120°C längerfristig <i>permanently</i>
④	Unterteil <i>Base</i>	Stahl, verzinkt <i>Steel, galvanized</i>	
⑤	Dichtungsring Einschraubzapfen <i>Sealing ring Fitting</i>	NBR (Acrylnitril- Butadien-Kautschuk)	-60° ... +150°C kurzfristig <i>short term</i>
⑥	Einfülltülle <i>Filling spout</i>	Edelstahl V2A 1.4301 <i>Stainless steel</i>	
⑦	Einschraubzapfen <i>Fitting</i>	Edelstahl 316 SS <i>Stainless Steel 316 SS</i>	R ¼ oder ¼-18 NPT